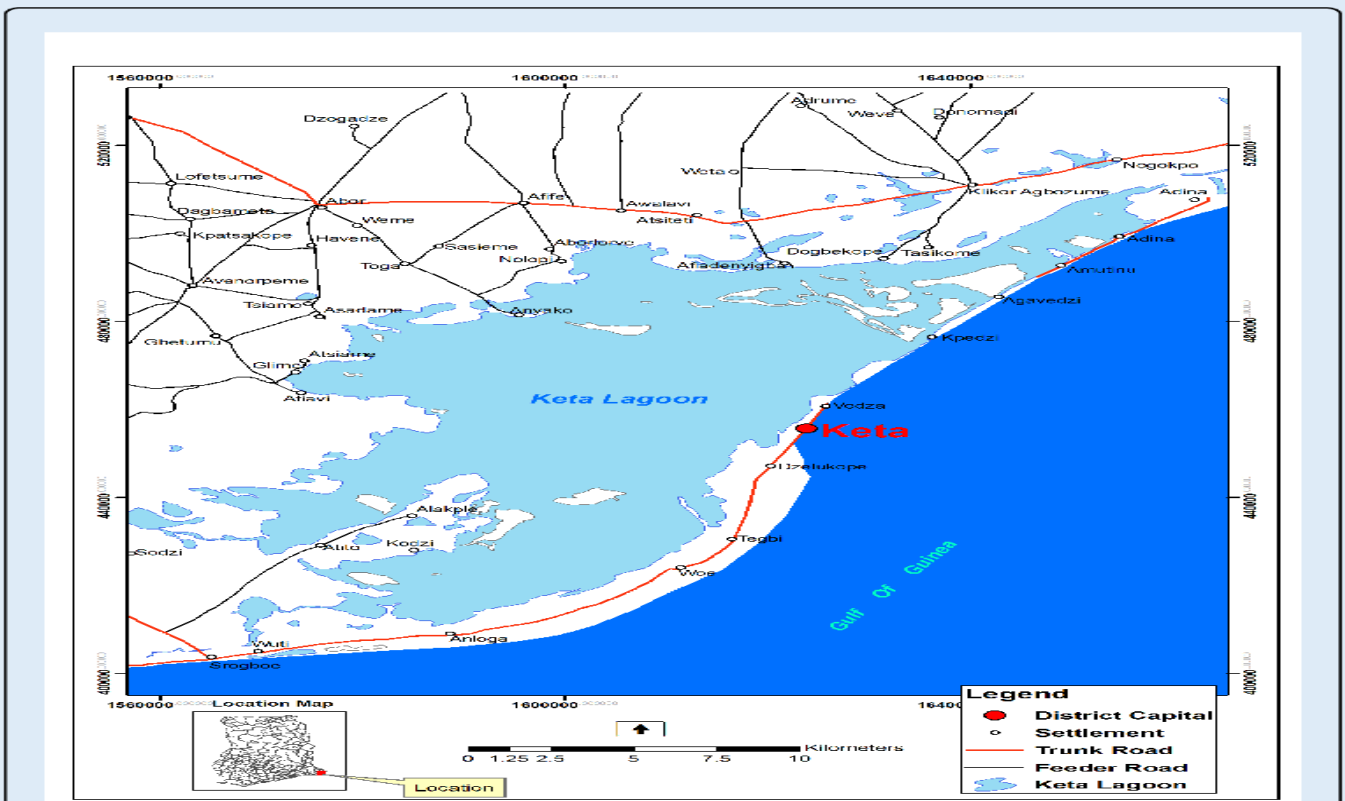


Quick Update of Tidal waves in Keta District in the Volta region
(Over 3000 People Rendered Homeless)
November 7, 2021.

BACKGROUND/ DEMOGRAPHY

Map of Keta District in the Volta Region



- ✓ **Region:** Volta
- ✓ **District:** Keta Municipal Assembly
- ✓ **Location:** Keta
- ✓ **Population:** Keta has a population settlement of 147,168 (Male 68,556 Female 79,062)
- ✓ **Location:** Keta shares borders with Akatsi South Municipal to the north, Ketu South Municipal to the east, South Tongu District to the west and the Gulf of Guinea to the south. Total surface area of 1,086km², approximately 362km² (about 30 per cent) is covered by water bodies. The largest of these is Keta Lagoon, which is about 12 km at its widest section and 32km long. Hence, the remaining land area is only 724km² a situation which creates severe constraints on access to land for development in the municipality. However, fishing and water transportation potentials exist.
- ✓ **Coordinates:** The Municipality lies within Longitudes 0.30E and 1.05E and Latitudes 5.45N and 6.005N. It is located east of the Volta estuary, about 160km to the east of Accra, off the Accra-Aflao main road.



NEWS Quick Updates

Website: www.wanep.org / www.wanepghana.org ||

Email: info@wanepghana.org / news@wanepghana.org || Phone: +233 (0)0372098747

INCIDENT PROFILE

At least 3000 individuals have been displaced in the Keta Municipality as tidal waves swept through their homes early Sunday, November 7, 2021. Communities including Abutiakpe, Kedzikope, and Keta Central have been severely affected, leaving residents with nothing to reclaim. The displaced residents have been left trapped, with many describing the situation as intolerable and requesting rapid government intervention.

RISKS ANALYSIS:

Flooding in Ghana, particularly in the Keta Municipality in the Volta region, has been of national importance due to its geographical location, which is bordered by the Keta Lagoon, Ghana's largest lagoon with a water area of 300 km². Over 3000 individuals were displaced by the recent tidal wave that hit the Keta Municipality, and countless houses were damaged. The municipality is well-known in the region for its tourist attractions and revenue generation. For this reason, tourism is likely to be affected, with ripple effect on the local economy of Keta. Aside from this, schools and education structures have been devastated, with ripple effect on the education of children, students, and teachers in the affected communities.

Another cause for concern is the potential impact of the tidal wave on health security of the affected populations in the affected communities. Given the over 3000 IDPs affected by the waves and the current spread of COVID-19 pandemic in the country, the risk of further spread is high among the populations devastated by the tidal waves. Also, the risk of outbreak of other diseases including cholera, diarrhoea and malaria among the affected population is also likely.

The tidal waves could potentially affect food security in the affected communities. The Keta Sea is a source of fishing value chain and other economic livelihoods of populations in most of the communities in Keta. Considering the impact of the natural disaster on fishing activities of community members, food security, especially fish trading is likely to be stalled. Consequently, this could lead to high demand and limited supply that would increase prices on fish in markets and thus affect household consumption in the affected communities.



NEWS Quick Updates

Website: www.wanep.org / www.wanepghana.org ||

Email: info@wanepghana.org / news@wanepghana.org || Phone: +233 (0)0372098747

MECHANISMS FOR INTERVENTIONS:

- Municipal Chief Executive of Keta, Hon Emmanuel Gemegali and National Disaster Management Organization (NADMO) officials have visited the affected communities to assess the situation and to ascertain support to be provided. A search and rescue have also been completed by NADMO.
- Currently, NADMO has mobilized relief items to be distributed to affected people and church buildings has been secured temporary to accommodate displaced residents in affected communities.

RECOMMENDATIONS:

- There is the need for the National Disaster Management Organisation (NADMO) to strengthen collaboration with the Keta Municipal Authorities, traditional authorities, faith-based organisations, local NGOs and other relevant agencies to conduct humanitarian needs assessment and provide the needed support to vulnerable populations in the affected areas.
- The Keta Municipal Authority also need to strengthen collaboration with the Ministry of Health and other health centres in the municipality to provide health support to the internally displaced persons and conduct disease surveillance, while strengthening COVID-19 measures to mitigate potential spread of the pandemic in the affected areas of the municipality.

REFERENCES:

- <https://3news.com/tidal-waves-go-to-the-aid-of-people-of-keta-amaliba-to-govt/>
- <https://www.myjoyonline.com/tidal-waves-render-about-3000-homeless-in-keta/?param=>
- <https://www.modernghana.com/news/1116935/vr-another-tidal-waves-hit-keta-residents-displ.html>

For further information, kindly contact Albert Yelyang, National Network Coordinator through 0244156898 OR ayelyang@wanepghana.org